

Organizers



Co-organizer



Supported by

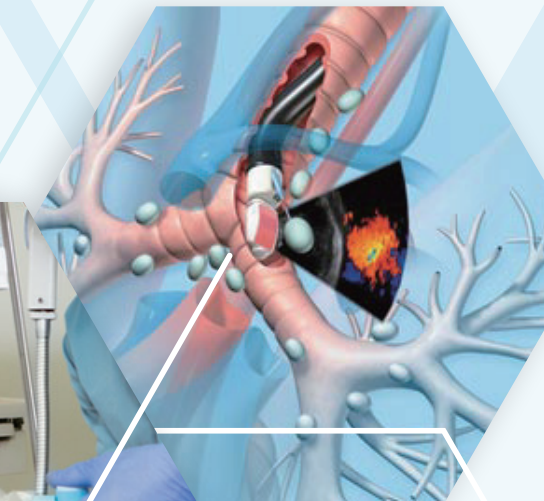
OLYMPUS

Interventional Pulmonology Workshop

12 – 13 November 2019 ♦ Hanoi, Vietnam

Venue: Bach Mai Hospital

*Come and
Join Us!*



Course Director:

Professor Chau NGO QUY

Director, Respiratory Center, Bach Mai Hospital
President, Vietnam Respiratory Society
Vietnam

Faculty Members:

Dr. Johnny CHAN

Consultant, Department of Medicine, Queen Elizabeth Hospital
Vice-Chairman, Asian Pacific Interventional Pulmonology Alliance
Hong Kong

Dr. Prashant N. CHHAJED

Head, Department of Respiratory Medicine, Fortis Hospitals Mumbai
and Navi Mumbai
Director, Institute of Pulmonology, Medical Research and Development
India

Dr. Bing LAM

Director, Respiratory Medicine Centre, Hong Kong Sanatorium & Hospital
Chairman, Asian Pacific Interventional Pulmonology Alliance
Hong Kong

Course Co-director:

Dr. Bing LAM

Director, Respiratory Medicine Centre, Hong Kong Sanatorium & Hospital
Chairman, Asian Pacific Interventional Pulmonology Alliance
Hong Kong

Dr. Giap VU VAN

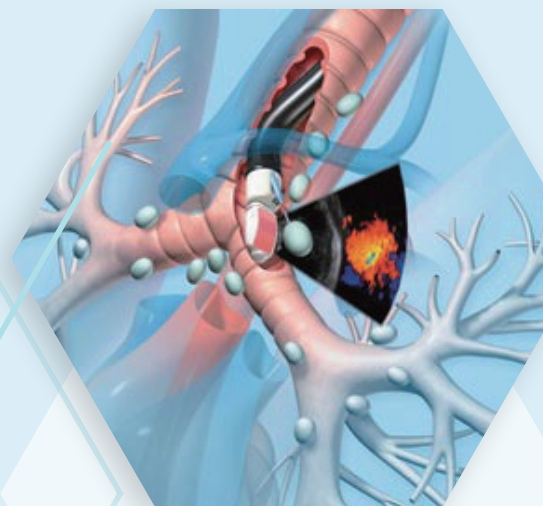
Vice Director, Respiratory Center, Bach Mai Hospital
General Secretary, Vietnam Respiratory Society
Vietnam

Dr. King-ying WONG

Specialist in Respiratory Medicine
Treasurer, Asian Pacific Interventional Pulmonology Alliance
Hong Kong

PROGRAMME

Day 1: 12 November 2019



Time		Speaker		
09:00 – 09:30	Registration			
09:30 – 09:40	Welcome Speech			Chau NGO QUY
09:40 – 09:50	Introduction of APIPA			Johnny CHAN
Basic EBUS				
09:50 – 10:20	Patient Preparation and Safety Issues			Johnny CHAN
10:20 – 10:50	Clinical Applications of EBUS-TBNA in Diagnosis of Respiratory Diseases			Johnny CHAN
10:50 – 11:05	Q&A			All
11:05 – 11:30	Tea Break			
11:30 – 12:00	EBUS: Basic Principles, Types and the Equipment			Prashant N. CHHAJED
12:00 – 12:30	Radial EBUS in the Diagnosis of Peripheral Lung Lesions			King-ying WONG
12:30 – 12:45	Q&A			All
12:45 – 13:30	Group Photo and Lunch			
EBUS-TBNA				
13:30 – 14:00	EBUS-TBNA Techniques: Scope Introduction, Basic Landmarks, Systemic Approach in Linear EBUS			Bing LAM
14:00 – 14:30	EBUS-TBNA versus Conventional TBNA, EBUS + EUS and EBUS via Esophageal Route			Bing LAM
14:30 – 15:00	EBUS-TBNA Complications and Management			Prashant N. CHHAJED
15:00 – 15:15	Q&A			All
15:15 – 15:30	Tea Break			
Hands-on Session				
	Station 1: EBUS model	Station 2: EBUS model	Station 3: Accessories	Speaker
15:30 – 16:15	Group A	Group B	Group C	Johnny CHAN
16:15 – 17:00	Group B	Group C	Group A	Prashant N. CHHAJED Bing LAM
17:00 – 17:45	Group C	Group A	Group B	Giap VU VAN King-ying WONG

PROGRAMME

Day 2: 13 November 2019



Time		Speaker
09:00 – 12:00	On-Patient Live Demonstration	Demonstrators: Giap VU VAN Bach Mai Hospital team Commentators: Johnny CHAN Prashant N. CHHAJED Bing LAM King-ying WONG
12:00 – 12:15	Closing Remark and Certification	Chau NGO QUY

- See you soon -